

Dispersal Notes



August 2016 News Flyer

Department of Plant Pathology and Microbiology
Iowa State University

Calendar

August 22nd – Classwork begins for Fall semester

August 23rd – [Soybean Cyst Nematode Clinic](#) at Field Extension Education Laboratory (FEEL). Check-in at 8:00. Pre-registration required.

August 24th – [Crop Disease Clinic](#) at FEEL. Check-in at 8:30 am. Pre-registration required.

September 9th – [Annual PLPM retreat](#) from 4:30 to 8:30 p.m. at Story County Conservation Center (McFarland Park).

Recent Publications

Abeysekara, N.S., Matthiesen, R.L., Cianzio, S.R., Bhattacharyya, M.K., and Robertson, A.E. 2016. [Novel sources of partial resistance against *Phytophthora sojae* in soybean PI 399036](#). *Crop Sci.* 56:1-14.

Batzer, J.C., Weber, R.W.S., Singh, I., Mayfield, D.A., and Gleason, M.L. 2016. [Diversity of the sooty blotch and flyspeck complex on apple in Germany](#). *Mycological Progress* 15:2 doi 10.1007/s11557-015-1145-9.

Beeman, A.Q., Harbach, C.J., Marett, C.C., and Tylka, G.L. 2016. [Soybean cyst nematode HG type test results differ among multiple samples from the same field but the management implications are the same](#). *Plant Health Prog.* 17:160-162.

Ismail, S.I., Batzer, J.C., Harrington, T.C., Crous, P.W., Lavrov, D.V., Li, H., Sun, G., and Gleason, M.L. 2016. [Ancestral state reconstruction infers phytopathogenic origins of sooty blotch and flyspeck fungi on apple](#). *Mycologia* 108:292-302.

Kandel, Y.R., Wise, K.A., Bradley, C.A., Tenuta, A.U., and Mueller, D.S. 2016. [Effect of planting date, seed treatment, and cultivar on plant population, sudden death syndrome, and yield of soybean](#). *Plant Dis.* 100:1735-1743.

Peng, H.X., Wei, X.Y., Xiao, Y.X., Sun, Y., Shang, S.P., Biggs, A.R., Gleason, M.L., Zhu, Q., Guo, Y.Z., and Sun, G.Y. 2016. [Management of apple Valsa canker with adjustments to potassium nutrition](#). *Plant Dis.* 100:884-889.

Zhang, X., Harrington, T.C., Batzer, J.C., Kubota, R., Peres, N.A., and Gleason, M.L. 2016. [Detection of *Collectotrichum acutatum sensu lato* on strawberry by loop-mediated isothermal amplification](#). *Plant Disease* <http://dx.doi.org/10.1094/PDIS-09-15-1013-RE>.

Yang, S., Li, X., Chen, P., Kyveryga, P., and Yang, X.B. 2016. [Assessing field-specific risk of soybean sudden death syndrome using satellite imagery in Iowa](#). *Phytopathology* 106:842-853.

Departmental Updates

Greg Tylka named Fellow of Society of Nematologists

Greg Tylka, a professor in the PLPM department, was named a Fellow of the Society of Nematologists at their 2016 annual meeting held in Montreal, Canada from July 17th-21st. Tylka has been at Iowa State University since 1990, where he has had led a research and extension program focused on the



Photo: SON

biology and management of the soybean cyst nematode. The award was presented to Tylka (pictured, right) by Patricia Timper (pictured, left), president of SON and co-winner, with Tylka, of the Best Student Paper award at the 1988 SON meeting.

Forrest Nutter wins Excellence in Teaching Award at APS

Forrest Nutter, a professor in the PLPM department, was awarded the 2016 Excellence in Teaching award at the annual American Phytopathological Society meeting held in Tampa, Florida from July 30th to August 3rd. Nutter has been at Iowa State University since 1990,



Photo: M. Raza

where he has had a research and teaching program centered on plant epidemiology. A detailed background of Nutter's accomplishments can be found [here](#). Nutter (pictured, center) received the award from Timothy Murray (President, APS, pictured left) and Sally Miller (Immediate Past President, APS, pictured right).

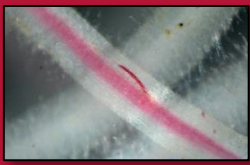
Mark Gleason delivers research ethics mini-course in Serbia

Mark Gleason, a professor in the PLPM department, presented a 2-week-long mini-course on research ethics to graduate students and faculty at the Faculty of Agriculture, University of Belgrade, Serbia, from May 9th-20th, 2016. The attendees discussed research ethics issues in a curriculum



Mark Gleason (back row, center) with students from the University of Belgrade, Serbia,

based on a one-credit, semester-long ISU course. This mini-course, along with another course on professional speaking skills during November 2015, was funded by a Fulbright Specialist grant and the U.S. Embassy in Belgrade. The Faculty of Agriculture at University of Belgrade is currently considering adding a course in research ethics to its graduate curriculum.



Dispersal Notes



August 2016 News Flyer

Department of Plant Pathology and Microbiology
Iowa State University

Photos from Society of Nematologists Meeting



Gennady Pogorelko, assistant scientist in the Baum lab, presenting his research, titled “*Heterodera* effector protein 4E02 is a powerful regulator of plant susceptibility”.

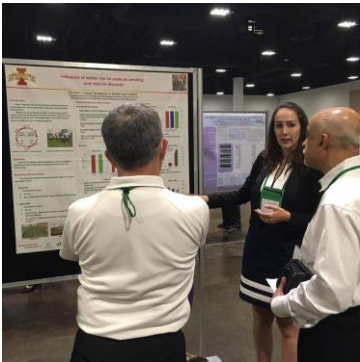


Jared Jensen, PhD student in the Tylka lab, presenting his research, titled “Video analysis software to measure nematode movement with applications for accurate screening of nematode control compounds”.

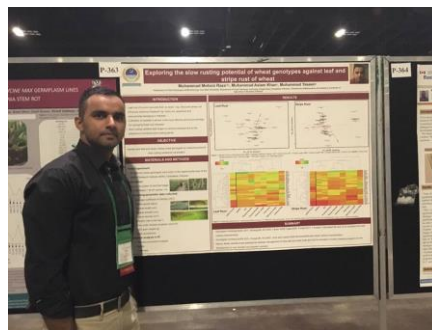


Augustine Beeman, PhD student in the Tylka lab, presenting his research, titled “A scanner assay developed to quantify nematode population movement and its applications for nematicide screening”.

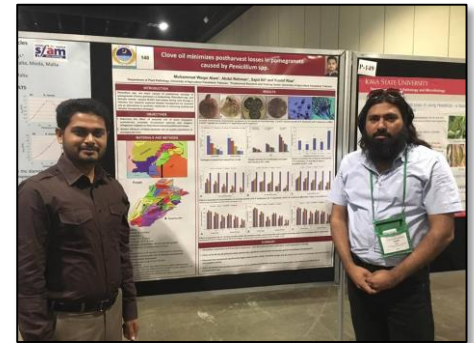
Photos from American Phytopathological Society Meeting



Grazi Araldi da Silva, PhD student in the Leandro lab, presenting her research, titled “Study of the influence of winter rye on soybean seedling and root diseases”.



Muhammad Mohsin Raza, a PhD student in the Nutter lab, presenting his research, titled “Exploring the slow rusting potential of wheat genotypes against leaf and stripe rust of wheat”.



Muhammad Wagar Alam (left), a visiting scholar in the Gleason lab, presenting his research with co-author Dr. Kashif Riaz, titled “Clove oil minimizes postharvest losses in pomegranate caused by *Penicillium* spp.”.

Kaitlyn Bissonnette joins PLPM

[Kaitlyn Bissonnette](#) joined the Tylka lab in July 2016 as a postdoctoral research associate, where she will be involved with soybean cyst nematode extension efforts. Bissonnette received her M.S. from University of Idaho and Ph.D. from University of Illinois, where she studied *Fusarium* head blight management techniques.



Follow us on our website or social media!

